

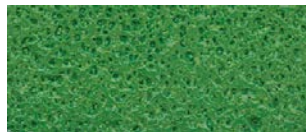
Deckshield Rapide ID systems Intermediate Deck (3 – 4 mm)



Standard colour chart



Mid Grey



Forest Green



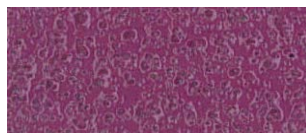
Dark Grey



Tile Red



Traffic Blue



Traffic Purple

The applied colours may differ slightly from the examples shown above. Contact our customer services for a true colour sample or a special colour match. Special corporate colours and designs can be produced to special order.

Description

Deckshield Rapide ID is a solvent free methyl methacrylate car park deck coating system which provides a colourful crack bridging, waterproof wearing surface for use over internal decks of multi-storey car parks.

Uses

To cosmetically enhance, reduce noise and Deckshield makes multi-storey car parks lighter, safer environments to visit. Deckshield is suitable for refurbishment of existing car parks and on new construction projects.

Benefits

- Aesthetically attractive – brightens up dull, dark, musty car parks
- Reduces noise – stops tyre squeal
- Hard wearing – abrasion resistant
- Solvent free
- Fire resistant
- Slip resistant
- Resistant to cracking – flexible waterproof membrane
- Excellent bond strength
- Fast track Installation

Project References

Leeds arena; Millennium Stadium; Motorola; Shangri La Hotel; The Dubai Mall; Aviva Stadium; Warsaw Trade Tower.

Model Specification

Product: Deckshield Rapide ID system.

Finish: Satin Matt

Thickness: 3 - 4 mm

Colour: _____

Preparatory work and application in accordance with manufacturers instructions.

Manufacturer: Flowcrete UK Ltd

Telephone: Customer Service - +44 (0) 1270 753000

Substrate Requirements

Concrete or screed substrate should be a minimum of Compressive strength of 25 N/mm² (and 1.5 N/mm² Tensile strength tested by pull-off adhesion test on site). Substrate should be surface dry to 95% RH as per BS 8204 and free from laitance, dust and other contamination. The system is designed to cope with construction moisture but is not designed to resist hydrostatic water pressure. In such circumstances external tanking or pressure relief, by e.g. directed drainage, must be provided to the structure.

NB: Technical proposals are written for each installation to meet the client's particular requirements, the final thickness will be dependant upon the specification.

Typical system proposals include:-

Deckshield Rapide ID for normal wear areas (e.g. parking bays and lighter traffic).

Deckshield Rapide ID-HD for heavier wear areas (e.g. drive aisles, turning points and ramps).

Deckshield Rapide ID-Ramp for very heavy wear areas (e.g. sole entry/exit ramps and turning points).

Installation Service

The installation should be carried out by a Deckshield licensed contractor with a documented quality assurance scheme.

Obtain details of our licensed contractors by contacting our customer service team or enquiring via our web site www.flowcrete.co.uk

Notes

Please contact our Technical Advisors for details of specialist companies to supply line-marking, which can be re-coated throughout the life of the Deckshield system.

No resin system is totally colour fast and may change colour over time (exhibits a yellowing effect). Colour change depends on the UV light and heat levels present and hence the rate of change cannot be predicted. This is more noticeable in very light colours but does not compromise the product's physical or chemical resistance characteristics. We have endeavoured to adopt colours within our standard range which minimise this change.

Focus on the Floorzone

Flowcrete are market leaders in specialist industrial and commercial flooring. Systems available include: underfloor heating systems, floor screeds, surface damp proof membranes, decorative floor finishes, seamless terrazzo, car park deck waterproofing, tank lining systems... to name just a few.

Our objective is to satisfy your Floorzone needs.

Technical Information

The figures that follow are typical properties achieved in laboratory tests at 20°C and at 50% Relative Humidity for a standard specification.

Reaction to fire	C _{FL} - s1 (EN 13501-1)
Slip/skid resistance (EN 13036-4)	Class I: >40 units wet tested Class II: >40 units dry tested

The slipperiness of flooring materials can change significantly, due to the installation process, after short periods of use, due to inappropriate maintenance, longer-term wear and/ or surface contaminants (wet or dry).

Resistance to chemical attack (BS EN ISO 2812-1)	Resistant to petrol, diesel, antifreeze, hydraulic fluids and battery acids.
Abrasion Resistance (EN ISO 5470-1)	weight loss < 3000 mg using H22 wheel, 1000 cycles, load 1000 g
Impact Resistance (EN ISO 6272-1)	Class II: ≥10 Nm
Adhesion by pull-off test (EN 1542)	≥1.5 N/mm ² (with or without trafficking)

Speed of Cure (per layer)

Walk on	1 hour
Full traffic & chemical cure	2 - 3 hours

Cure at ambient temperatures in the range 0°C to +30°C can be achieved by altering the quantity of catalyst used.

Aftercare Cleaning and Maintenance

Clean regularly using a single or double headed rotary scrubber drier in conjunction with a mildly alkaline detergent.

Environmental considerations

The finished system is assessed as non-hazardous to health and the environment. The long service life and seamless surface reduce the need for repairs, maintenance and cleaning. Environmental and health considerations are controlled during manufacture and application of the products by Flowcrete staff and fully trained and experienced contractors.

Important Notes

Flowcrete's products are guaranteed against defective materials and manufacture and are sold subject to its standard Terms and Conditions of Sale, copies of which can be obtained on request.

Any suggested practices or installation specifications for the composite floor or wall system (as opposed to individual product performance specifications) included in this communication (or any other) from Flowcrete UK Ltd constitute potential options only and do not constitute nor replace professional advice in such regard. Flowcrete UK Ltd recommends any customer seek independent advice from a qualified consultant prior to reaching any decision on design, installation or otherwise.