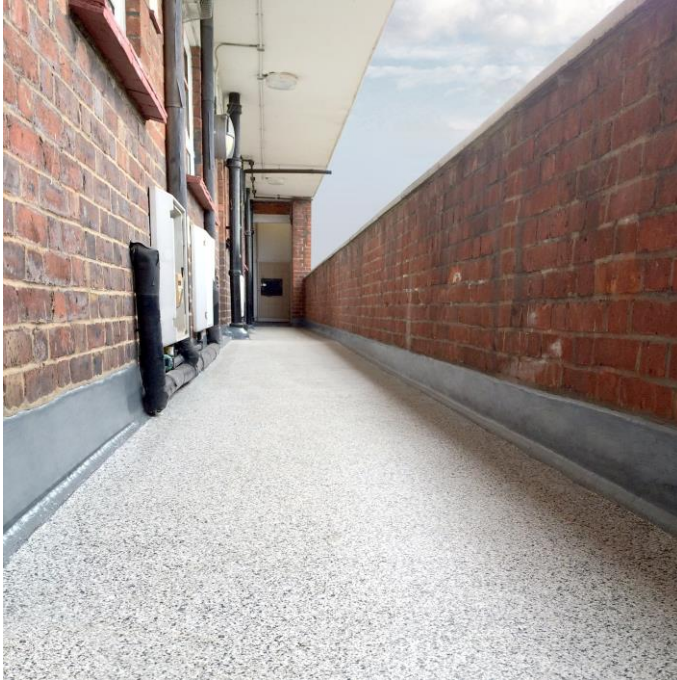


Flowfast SHF (4 mm)



Description

Flowfast SHF is a fast cure methyl methacrylate (MMA) floor system with a light textured decorative flake finish for communal walkways and balconies in social housing developments. Flowfast SHF has been developed to enable very fast track applications, therefore dramatically reducing disturbance to residents.

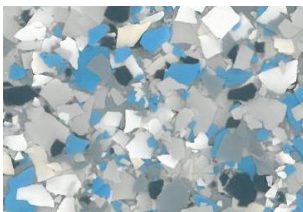
Uses

Ideal for use in: residential environments, schools, hospitals and leisure facilities.

Benefits:

- Fast cure for minimal disturbance to occupants
- Eye catching with a decorative flake finish
- Abrasion and impact resistant
- Suitable for internal and semi-exposed areas
- Can be laid on top of existing asphalt surfaces
- Protects structural integrity of concrete structure

Standard Colour Range



Marine (uses RAL 7004 pigment)



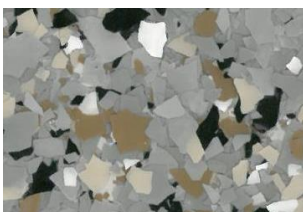
Aqua (uses RAL 9010 pigment)



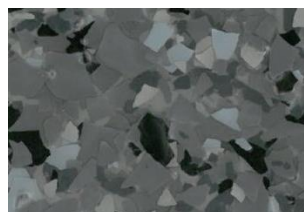
Iceberg (uses RAL 9010 pigment)



Smoke (uses RAL 7001 pigment)



Tortoiseshell (uses RAL 7004 pigment)

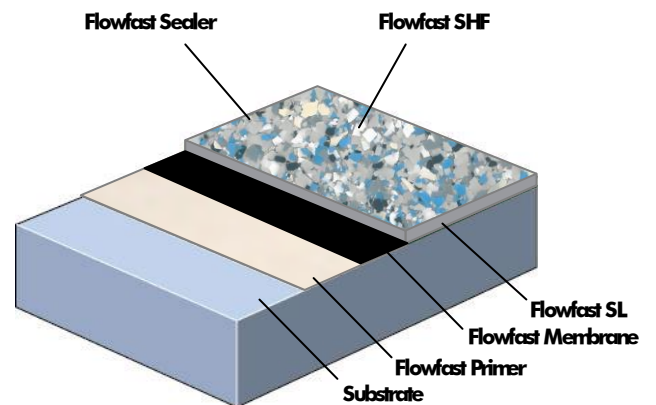


Nightshade (uses RAL 7037 pigment)

Flowfast Pigment is available in 25 kg bags, please allow 10 working days lead time.

The applied colours may differ slightly from the examples shown above. Contact our customer services for a true colour sample or a special colour match. Special corporate colours and designs can be produced to special order.

System Design



Model Specification

Product: Flowfast SHF

Finish: Satin

Thickness: 4 mm

Colour: _____

Preparatory work and application in accordance with manufacturer's instructions

Manufacturer: Flowcrete UK Ltd

Telephone: Customer Service - +44 (0) 1270 753000

Substrate Requirements

Concrete or screed substrate should be a minimum of 25N/mm², free from laitance, dust and other contamination. The substrate should be dry to 95% RH as per BS8204 and free from rising damp and ground water pressure.

Flowfast Damp Primer can be used for substrates up to 100% RH (surface dry).

Products Included in this System

Primer: Flowfast Primer @0.3-0.5 kg/m²

Scatter: Natural Quartz 0.3-0.8mm @0.3 kg/m²

Membrane: Flowfast Membrane @2.4 kg/m²

Flowfast SL:

Flowfast Binder @1.5 kg/m² mixed with:

Flowfast Pigment Powder

@3% weight of Flowfast Resin

Flowfast SNL Filler @3.0 kg/m²

Scatter: Flowfast SHF Flake @0.8 kg/m² (to excess)

Sealer: Flowfast Standard Seal @0.25 kg/m² per coat (2 cts)

Consult individual Product Data sheets for information on Flowfast Catalyst levels.

Detailed application instructions are available upon request.

Installation Service

The installation should be carried out by an approved contractor with a documented quality assurance scheme. Obtain details of our approved contractors by contacting our customer service team or enquiring via our web site www.flowcrete.co.uk

Note

No resin system is totally colour fast and may change colour over time (exhibits a yellowing effect). Colour change depends on the UV light and heat levels present and hence the rate of change cannot be predicted. This is more noticeable in very light colours but does not compromise the product's physical or chemical resistance characteristics. We have endeavoured to adopt colours within our standard range which minimise this change.

Intensively coloured products (e.g. hair colorants, medical disinfectants etc.) and plasticizer migration (e.g. from rubber tyres) can lead to irreversible discoloration in the sealer. Please contact our Technical Services Department for further advice.

Focus on the Floorzone

Flowcrete are market leaders in specialist industrial and commercial flooring. Systems available include: underfloor heating systems, floor screeds, surface damp proof membranes, decorative floor finishes, seamless terrazzo, car park deck waterproofing, corrosion resistant systems... to name just a few. Our objective is to satisfy your Floorzone needs.

Technical Information

The figures that follow are typical properties achieved in laboratory tests at 20°C and at 50% Relative Humidity.

Reaction to fire	C _{FL} -s1	EN 13501-1
Impact Resistance	10 Nm	EN ISO 6272
Wear Resistance	<1 cm ³	EN 13892-5
Bond Strength	>2.5 N/mm ²	EN 13892-8
Temperature Resistance	Tolerant of sustained temperatures up to 50°C	
Water Permeability	Nil - Karsten test. (impermeable)	
Chemical Resistance	Good resistance to tea, coffee, cola, fruit juice, soaps and bleach	
Slip Resistance	Dry >40 low slip potential	
Method described in BS 7976-2 (typical values for 4-6 rubber slider)	Wet >20 moderate slip potential (in accordance with HSE and UKSRG guidelines)	

The slipperiness of flooring materials can change significantly, due to the installation process, after short periods of use, due to inappropriate maintenance, longer-term wear and/ or surface contaminants (wet or dry).

Textured systems are recommended to meet slip resistance value requirements for wet conditions and/ or surface contaminants (wet or dry) - please contact our Technical Advisors for further details and specifications.

Complies with BS 8204-6/FerFA type 4.

Speed of Cure (per layer)

Walk on	1 hour
Full traffic & chemical cure	2 -3 hours

Cure at ambient temperatures in the range 0° C to +30° C can be achieved by altering the quantity of catalyst used. For applications below 0° C, please consult our Technical Department.

Aftercare - Cleaning and Maintenance

Clean floors regularly using a rotary scrubber in conjunction with a mildly alkaline detergent.

Environmental considerations

The finished system is assessed as non-hazardous to health and the environment. The long service life and seamless surface reduce the need for repairs, maintenance and cleaning. Environmental and health considerations are controlled during manufacture and application of the products by Flowcrete staff and fully trained and experienced contractors.

Important Notes

Flowcrete's products are guaranteed against defective materials and manufacture and are sold subject to its standard Terms and Conditions of Sale, copies of which can be obtained on request.

Any suggested practices or installation specifications for the composite floor or wall system (as opposed to individual product performance specifications) included in this communication (or any other) from Flowcrete UK Ltd constitute potential options only and do not constitute nor replace professional advice in such regard. Flowcrete UK Ltd recommends any customer seek independent advice from a qualified consultant prior to reaching any decision on design, installation or otherwise.