

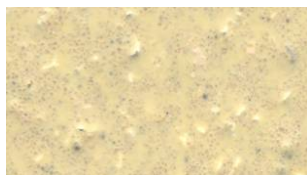
Flowfresh RT (6 - 9 mm)



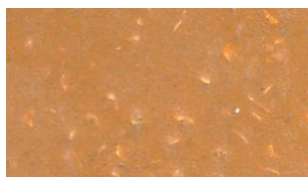
Standard colour chart



Ochre



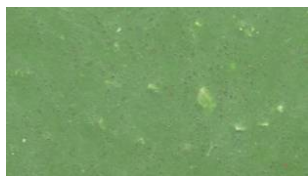
Cream



Mustard



Red



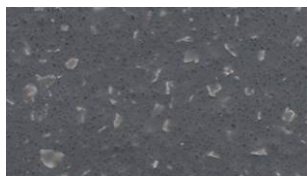
Dark Green



Mid Grey



Dark Blue



Dark Grey

The applied colours may differ slightly from the examples shown above. Contact our customer services for a true colour sample or a special colour match. Special corporate colours and designs can be produced to special order.

Description

Flowfresh RT is an easily applied 6 - 9 mm heavy duty, chemical resistant antimicrobial treated polyurethane resin floor screed. Attractive fine textured coloured floor finish with a speckled effect on the surface.

Uses

Ideal for wet processing zones such as food manufacturing, food preparation areas, and chemical processing plants.

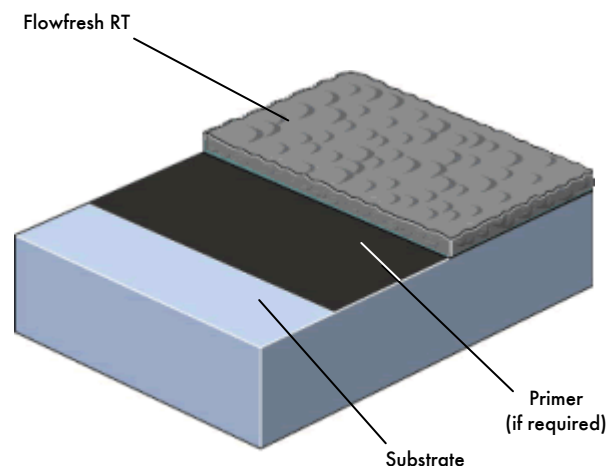
Benefits

- Contains Polygiene, an antimicrobial additive based on silver ion technology
- Ease of application, rake and trowel
- Very high chemical resistance
- Easy to clean and sterilise anti-slip surface, minimal joints
- Heat resistant to 120°C
- Steam cleanable
- Non tainting, non dusting
- High abrasion resistance
- Withstands high mechanical stress
- Good alternative to expensive acid resistant tiles
- Low odour during application
- Positive slip resistance

Project References

Baxter SA - Belgium, 4m Europe.
Nive Nunspeet - Holland, Masterfloor.
Fruttage S.c.r.l. - Italy, APS.
Readi-Bake - UK.

System Design



Model Specification

Product: Flowfresh RT

Finish: Matt

Thickness: _____mm (6 or 9 mm)

Colour: _____

Preparatory work and application in accordance with suppliers instructions. Supplier: Flowcrete UK Ltd

Telephone : Customer Service - +44 (0)1270 753000

Substrate Requirements

Concrete or screed substrate should be a minimum of 25N/mm², free from laitance, dust and other contamination. Check the relative humidity at ground level. Substrate humidity must not exceed 75% RH as per BS 8204 (otherwise the primer must be substituted by Hydraseal DPM) and be free from rising damp and ground water pressure.

For areas where continual heat resistance (above 50 °C) is critical, use Flowfresh Primer. Flowfresh Primer is also suitable for substrates up to 97% RH, please consult the Product datasheet for further details.

The priming process may be omitted when applying Flowfresh RT over an Isopol SBR screed, or when the consistency of the concrete base ensures minimal porosity, is free of voids and is surface dry up to 97% RH.

Products Included in this System

Primer (if required): Flowprime @ 0.25 kg/m²

OR, where a dpm is required,

Hydraseal DPM @ 0.5 kg/m²

OR, where high heat resistance is critical,

Flowfresh Primer @ 0.25 kg/m²

Scatter: 1-2 mm silica sand @ 0.5 kg/m²

Topping: Flowfresh RT (Density 2.1 kg/l)

For general chemical resistance - 12.6 kg/m² @ 6 mm

For best temperature resistance - 18.9 kg/m² @ 9 mm

Flowfresh RT is a self-sealing finish.

Detailed application instructions are available upon request.

Installation Service

The installation should be carried out by a Flowcrete approved contractor with a documented quality assurance scheme.

Obtain details of our approved contractors by contacting our customer service team or enquiring via our web site

www.flowcrete.co.uk

Note

Flowfresh RT is not colour fast and may change colour over time (exhibits a yellowing effect). Colour change depends on the UV light and heat levels present and hence the rate of change cannot be predicted. This is more noticeable in light colours and blues but does not compromise the product's flexibility or chemical resistance characteristics. We have endeavoured to adopt colours within our standard range which minimise this change.

Intensively coloured products (e.g. hair colorants, medical disinfectants etc.) and plasticizer migration (e.g. from rubber tyres) can lead to irreversible discoloration in the surface. Please contact our Technical Services Department for further advice.

Environmental considerations

The finished system is assessed as non-hazardous to health and the environment. The long service life and seamless surface reduce the need for repairs, maintenance and cleaning.

Environmental and health considerations are controlled during manufacture and application of the products by Flowcrete staff and fully trained and experienced contractors.

Flowcrete UK Ltd

The Flooring Technology Centre Booth Lane

Sandbach Cheshire CW11 3QF UK.

Tel: +44 (0) 1270 753000 Fax: +44 (0) 1270 753333

Email: uk@flowcrete.com

Flowcrete UK Ltd is an RPM company

Technical Information

The figures that follow are typical properties achieved in laboratory tests at 20 °C and at 50% Relative Humidity.

Reaction to fire	B _{FL} - s1	EN 13501-1
Impact Resistance	21 Nm	EN ISO 6272
Wear Resistance	Abrasion quantity <1 cm ³	EN 13892-5
Bond Strength	> 2.5 N/mm ²	EN 13892-8
Coefficient of Thermal Expansion	3.74 x 10 ⁻⁵ mm/mm °C	ASTM C531
Compressive Strength	> 50 N/mm ²	EN 13892-2
Flexural Strength	20 N/mm ²	EN 13892-2
Tensile Strength	10 N/mm ²	BS 6319-7
Temperature Resistance	Tolerant to intermittent spillages up to 120 °C or sustained dry heat from -40 °C to 105 °C (at 9 mm thickness)	
Water Permeability	Nil - Karsten test (impermeable)	
Vapour Permeability	ASTM E96:90 3 g/m ² /24hrs (at 9 mm thickness)	
Chemical Resistance	Contact Technical Department Excellent resistance to sugars and most acids (organic and inorganic)	
Slip Resistance	Dry >40 low slip potential	
Method described in BS 7976-2 (typical values for 4-S rubber slider)	(in accordance with HSE and UKSRG guidelines)	

The slipperiness of flooring materials can change significantly, due to the installation process, after short periods of use, due to inappropriate maintenance, longer-term wear and/ or surface contaminants (wet or dry).

Textured systems are recommended to meet slip resistance value requirements for wet conditions and/ or surface contaminants (wet or dry) - please contact our Technical Advisors for further details and specifications.

Complies with BS 8204-6/FeRFA type 8.

Speed of Cure

	10 °C	20 °C	30 °C
Light traffic	36 hrs	24 hrs	12 hrs
Full traffic	72 hrs	48 hrs	24 hrs
Full chemical cure	10 days	7 days	5 days

Aftercare - Cleaning and Maintenance

Clean regularly using a single or double headed rotary scrubber drier in conjunction with a mildly alkaline detergent.

Microbial / Fungal Resistance

The Polygiene antimicrobial additive incorporated into Flowfresh RT provides control of most bacteria and fungi which come into contact with the floor.

Antimicrobial Active substance: Silver biocide

Tested: ISO 22196/JIS Z2801.

Important Notes

Flowcrete's products are guaranteed against defective materials and manufacture and are sold subject to its standard Terms and Conditions of Sale, copies of which can be obtained on request.

Any suggested practices or installation specifications for the composite floor or wall system (as opposed to individual product performance specifications) included in this communication (or any other) from Flowcrete UK Ltd constitute potential options only and do not constitute nor replace professional advice in such regard. Flowcrete UK Ltd recommends any customer seek independent advice from a qualified consultant prior to reaching any decision on design, installation or otherwise.

Model Specification written for Flowcrete UK Ltd.

Please consult Technical Team in own country region for specific details.

www.flowcrete.co.uk